

Unleashing the Power of AI for Adaptive and Personalized Feedback: Enhancing Workplace Impairment Prevention through Total Worker Health®

April 22, 2025

The modern workplace presents a myriad of challenges that threaten the health and well-being of employees. **Total Worker Health® (TWH)**, a comprehensive approach that integrates workplace safety, health, and well-being, offers a promising framework for addressing impairment prevention. In this context, AI tools emerge as powerful allies, enabling adaptive and personalized feedback to enhance TWH initiatives and promote a healthier, safer, and more productive workforce.

Brought to you by:



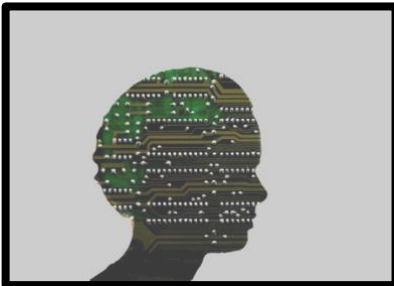
The Significance of Adaptive and Personalized Feedback in Workplace Impairment Prevention: Plays a crucial role in effective workplace impairment prevention for several reasons.

- **Real-Time Identification of Performance Gaps:** Real-time feedback allows employees to immediately identify areas for improvement, enabling them to address their weaknesses promptly and effectively.
- **Tailored Guidance and Support:** Personalized feedback provides targeted guidance and support tailored to individual needs and learning styles, enhancing comprehension and behavior change.
- **Promoting Self-Awareness and Motivation:** Real-time feedback fosters self-awareness and motivation, encouraging employees to take ownership of their learning and development.
- **Adapting to Individual Progress:** F systems can adjust their approach based on individual progress, ensuring that feedback remains relevant and effective throughout the learning process.



Leveraging AI for Real-Time and Personalized Feedback: AI tools offer a range of capabilities to enhance real-time and personalized feedback in the context of workplace impairment prevention.

- **AI-Powered Performance Monitoring:** Can continuously monitor employee performance during training and in real-world work scenarios, providing immediate feedback.
- **Multimodal Feedback Delivery:** AI-enabled feedback systems can deliver feedback in various formats, such as text, audio, or visual cues, catering to different learning preferences and abilities.
- **Integration with Training and Assessment Tools:** AI-powered feedback mechanisms can be seamlessly integrated with training and assessment tools, providing a continuous cycle of learning, feedback, and improvement.



Enriching Total Worker Health® Initiatives with AI-Powered Feedback: AI-powered adaptive and personalized feedback can significantly enhance TWH initiatives to promote workplace impairment prevention.

- **Early Identification of Impairment Risks:** Real-time feedback can identify patterns or anomalies in employee performance that may indicate underlying impairment concerns, facilitating early intervention and support.
- **Promoting Open Communication and Dialogue:** Real-time feedback can foster open communication and dialogue between employees and managers, encouraging discussions about impairment concerns and promoting a supportive work environment.

Certain states like New Jersey have established the role of the Workplace Impairment Recognition Expert ("WIRE") to help address these issues. Advanced Training Products offers an innovative solution: WIRE Certified Training™

Contact us today at Solutions@AdvancedTrainingProducts.com with any questions about WIRE Certified Training™ or visit our website: www.AdvancedTrainingProducts.com to get started!